

PRINT & PAPER: best on white paper, size A4 or US Letter, portrait format, black or colored:
only the pieces have to be in color (print colored or color them yourself)
TIP: print or stick all the necessary parts on thicker paper or cardboard!

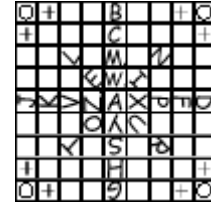
CHECKLIST 'AlphaOmega': (contents for 4 players) - 3 pages

- checklist, rules
- game board part 1
- game board part 2, pieces

- Cut out the **game board** parts & fit to match:
- **Pieces:** print in color or color them. Each player gets 3 pieces of one color!



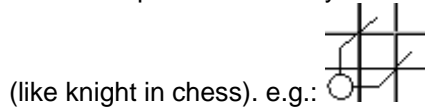
- You also need **paper & pen:** for writing down words and letters.



"AlphaOmega" RULES & COURSE OF THE GAME

Choose a word - make clever moves to the letters - and be aware of the opponents!
The player who reaches all letters of the word first wins!

- Each player gets 3 pieces (one color - 2 pieces with +, 1 with o) and places them on the marked startfields (+o+ in one 'corner' of the board) (each player in another corner of the board).
- Each player gets paper & pen. Then the group chooses ANY WORD in mind! (the longer the word, the longer the game). Everyone writes the word down. Same word for everyone!
- MOVE PIECES: move ONCE with ONE piece. Players proceed clockwise.
 - + piece: move one space horizontally or vertically
 - o piece: first one space horizontally or vertically THEN one space forward diagonally! = 1 move!!!!!!



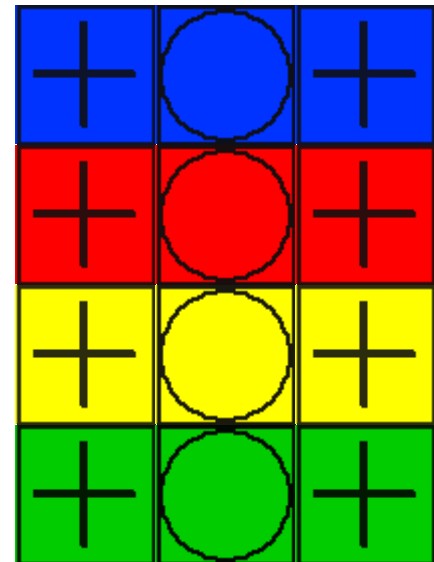
- TAKING PIECES: if a move stops on an opponent's piece, it is out of the game & given to the opponent. You can put a piece back into the game: place the piece on its startfield (when it's your turn). This counts as a move! (then it's the next player's turn).
- REACH and PREVENT LETTERS: you can get the letters in any sequence!
If your move ends on a letter of the word AND THAT PIECE ISN'T TAKEN FROM THE NEXT PLAYER RIGHT AFTER you moved on the letter - you have reached the letter and write it down!
- If the next player right after you takes your piece - the letter is not reached! (and your piece taken)
So write the letter down when it is really reached (the next player cannot take your piece).
- Only the NEXT player after you can prevent you from reaching a letter.
(The piece may be taken later or from another player - but the letter stays reached).
- **WINNER = the first one who has reached the word!**
- Not more than one piece on a field.
- You can jump over others with the o piece.
- Double letters have to be reached double!
If there are e.g. 3 Es in the word you have to reach the E 3 times!
- Q=OU

game board - part 1

○	+			B
+	<i>www.printgames.net</i>			C
		∨		M.
			E	W.
⋈	∨	∨	Ni	A
			O	∧
		∨		S
+	<i>alphaOmega</i>			H
○	+			G

game board part 2 & pieces

		+	○
		alphaOmega	+
	N		
T			
X	P	F	D
U			
	R		
		copyright by manuela&wiesl www.wiesl.net	+
		+	○



FINISHED! Thank you for using our services. HAVE FUN!